

Rock climbing in the Grampians National Park

February 2019 update

Background

Nationally heritage listed for its biodiversity and significant cultural heritage, the Grampians National Park Victoria was established in 1984 to protect environmental and cultural values of national importance.

The park has more than 800 indigenous plant species and is home to one third of Victoria's flora. It also supports a wide range of wildlife.

The Grampians National Park, which is part of the Gariwerd landscape, contains the majority of surviving Aboriginal rock art places in south-east Australia.

Key Issues

In recent years, rock climbing in the Grampians National Park has increased. Contemporary rock climbing activities such as bouldering and the use of fixed protection (bolts and chain anchors) has emerged, creating risk to irreplaceable cultural assets and environmental values.

A phased approach to compliance

From March 2019, Parks Victoria will be installing signs in eight initial locations within one of the Special Protection Areas. These eight locations are in the western part of the park and most at risk due to increased climbing activity ([see map overleaf](#)). Enforcement activity will begin following the installation of signs.

There are still hundreds of known climbing locations in the Grampians National Park, which are not in protected areas, for visitors to enjoy. These include the Bundaleer, Mount Stapylton Amphitheatre, The Watch Tower, Wonderland Area and Halls Gap Valley.

Special Protection Areas

A Special Protection Area protects specific natural or cultural values.

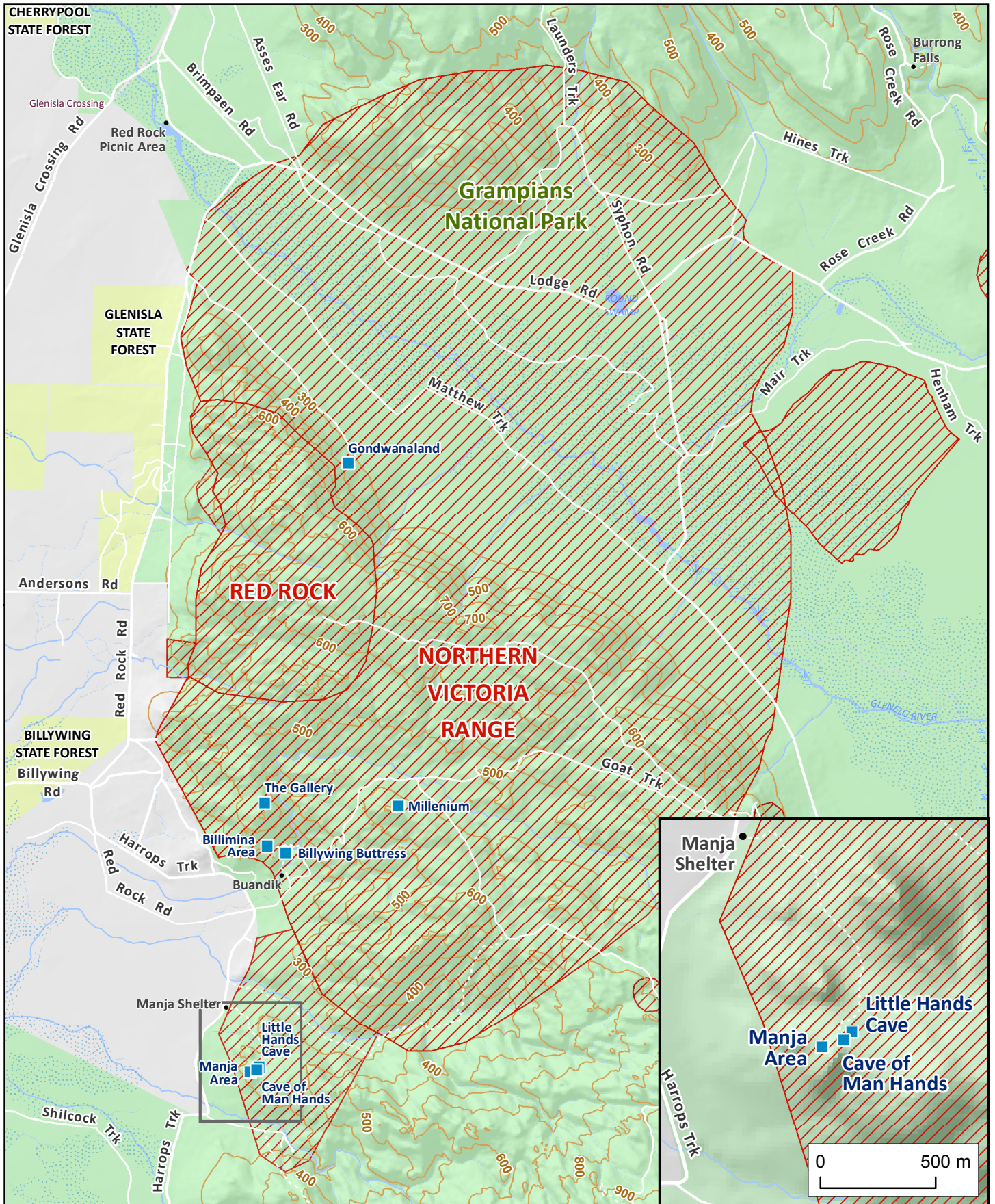
Special Protection Areas are identified in the existing Grampians National Park Management Plan and are for the protection of cultural heritage and environmental values. Climbing is prohibited in all Special Protection Areas and a few other identified locations. Maps showing these no climb locations are available on Parks Victoria's website.

Reviewing the Grampians National Park Management Plan

In the coming months, Parks Victoria will review the Grampians National Park Management Plan's Special Protection Areas. Through this process, Parks Victoria will work with partners and key stakeholders, including licenced tour operators and the rock climbing community. The review may result in further changes.



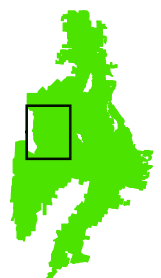
For further information, please contact:
communications@parks.vic.gov.au

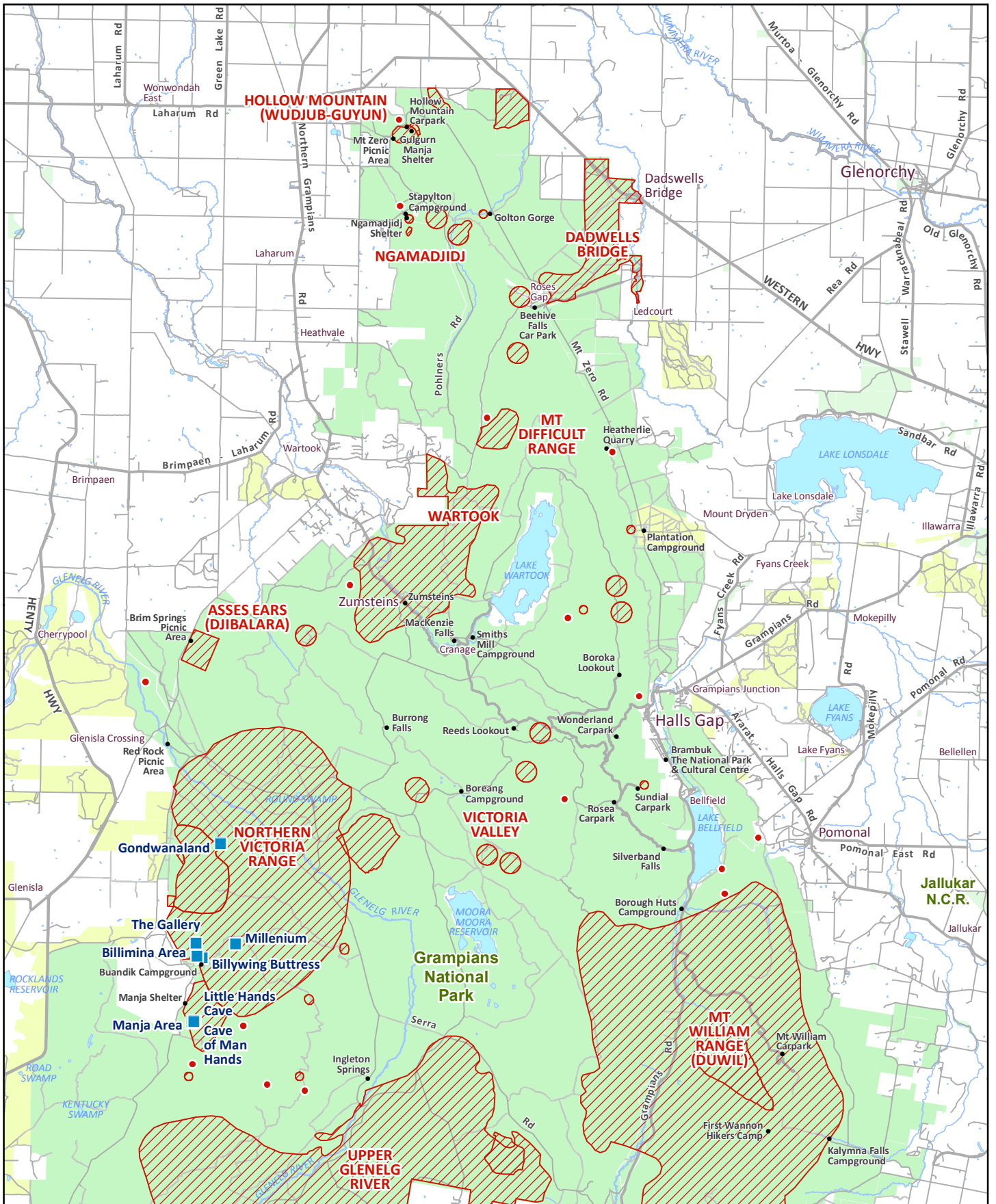


Eight Focus Areas

- Eight focus sites where signage will be installed and compliance activities occurring
- Protected areas - restrictions apply
- Parks Victoria Visitor Sites
- Grampians National Park
- State Forest

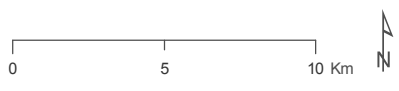
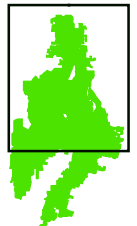
LOCALITY REGIONS





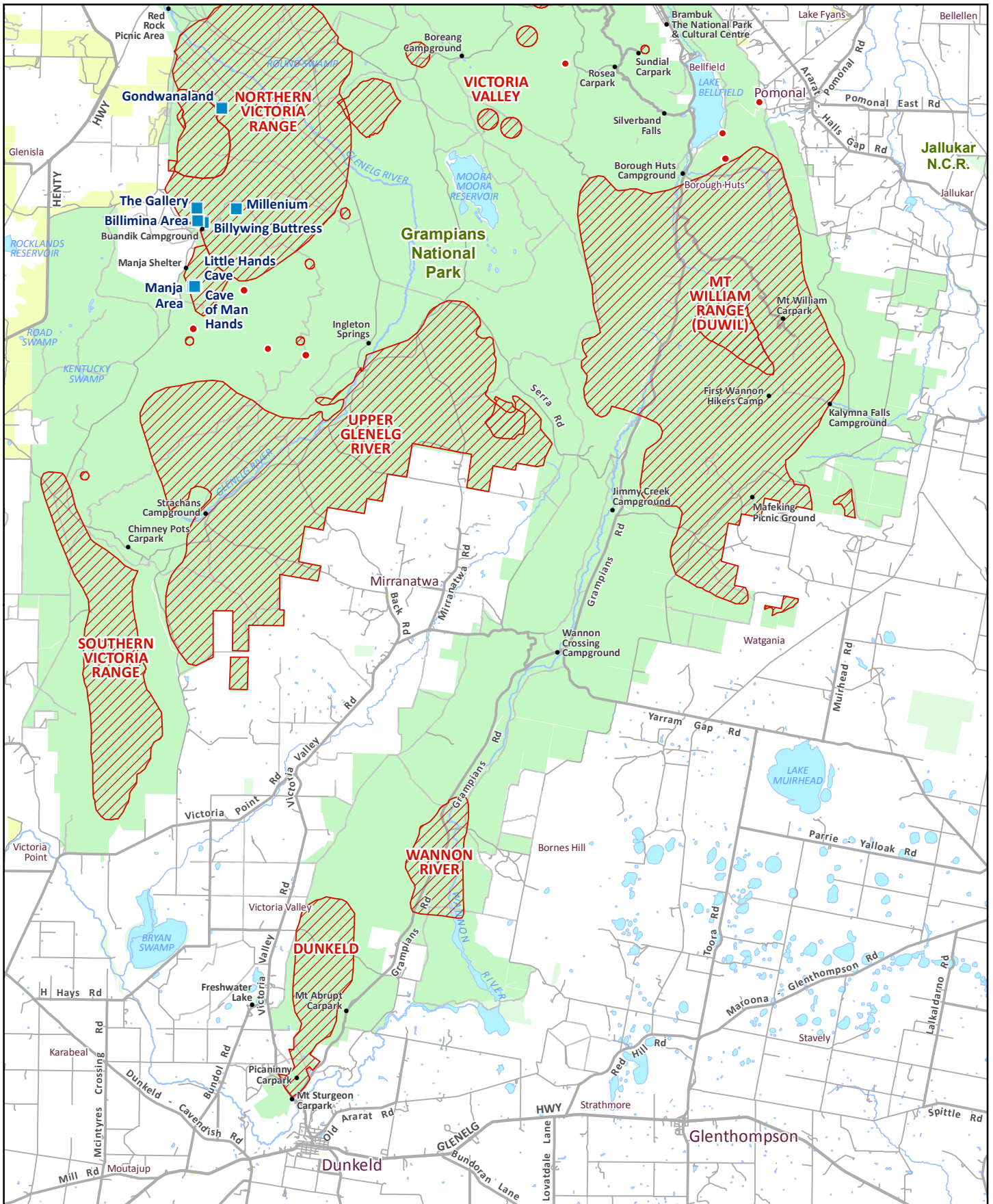
Grampians National Park - Rock Climbing Exclusion Zones (North)

- Protected Areas - restrictions apply
- Protected Areas - restrictions apply
- Eight focus sites where signage will be installed and compliance activities occurring
- Parks Victoria Visitor Sites
- National Parks
- Parks and Reserves
- State Forest
- LOCALITY REGIONS



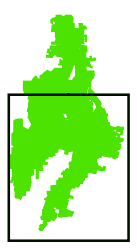
Disclaimer: Parks Victoria does not guarantee that this data is without flaw of any kind and therefore disclaims all liability which may arise from you relying on this information. Data source acknowledgements: State Digital Mapbase. The State of Victoria and the Department of Environment, Land, Water and Planning.

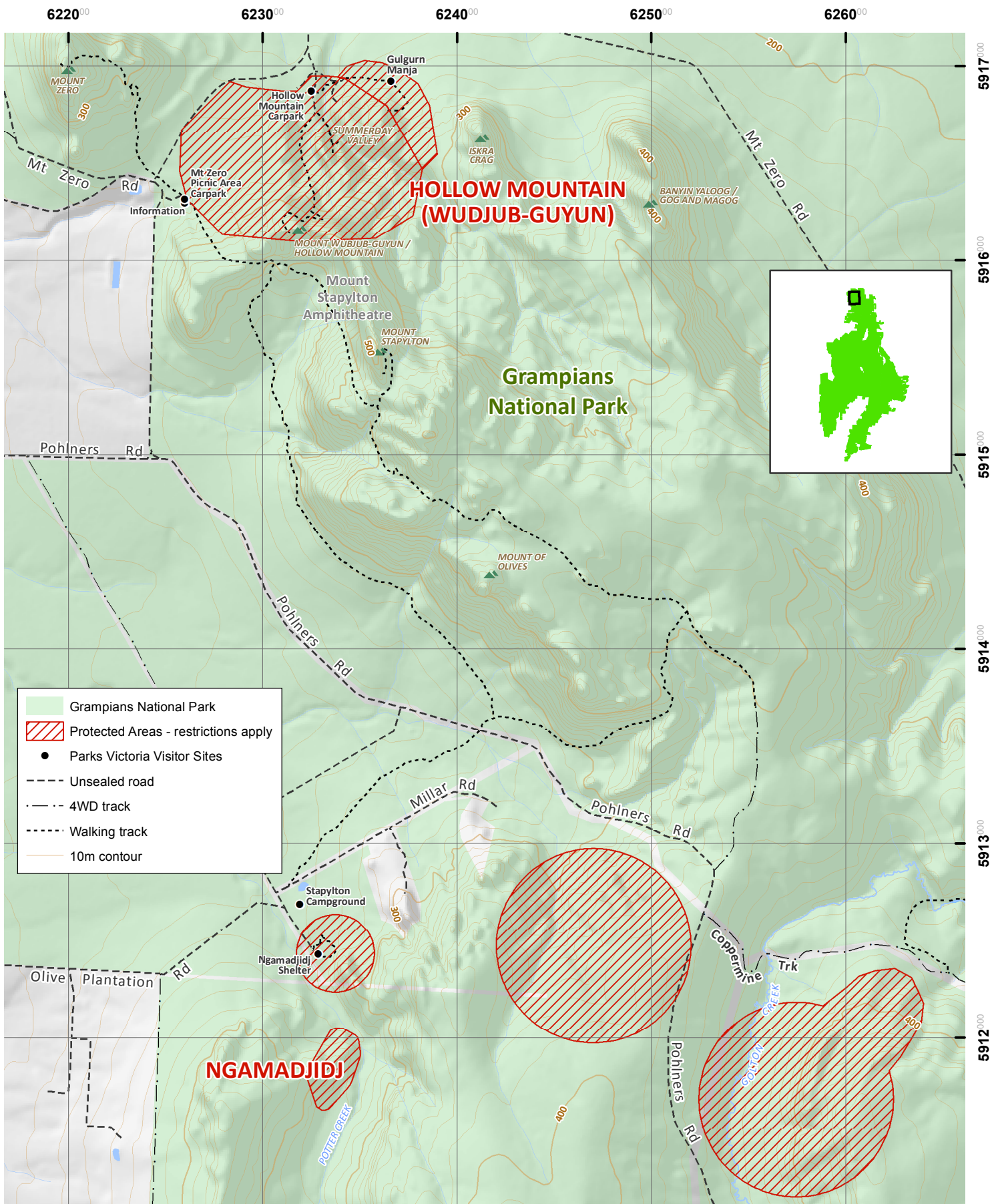
06/03/2019



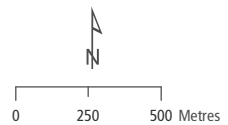
Grampians National Park - Rock Climbing Exclusion Zones (South)

- Protected Areas - restrictions apply
- ▨ Protected Areas - restrictions apply
- Eight focus sites where signage will be installed and compliance activities occurring
- Parks Victoria Visitor Sites
- National Parks
- Parks and Reserves
- State Forest
- LOCALITY REGIONS**

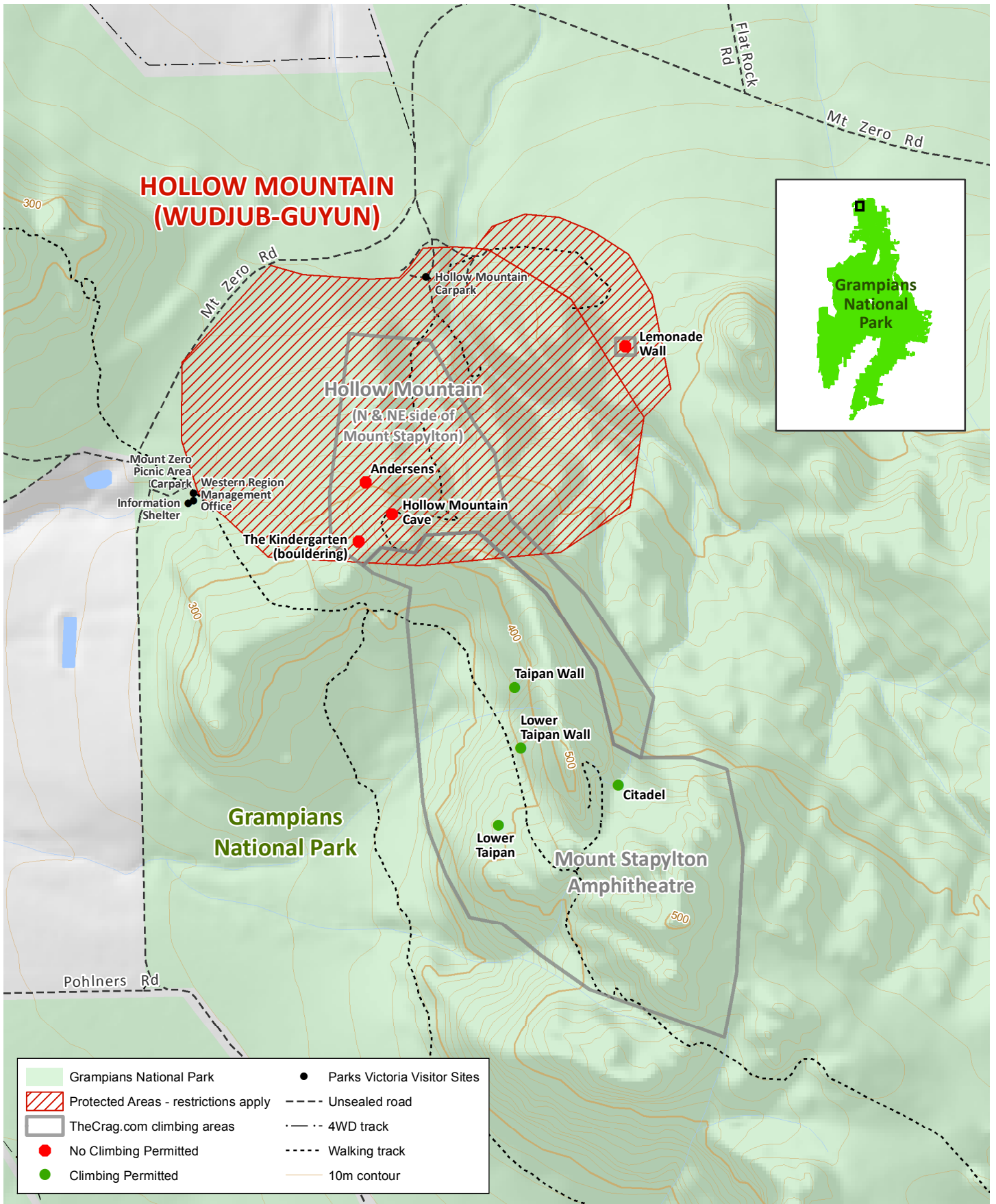




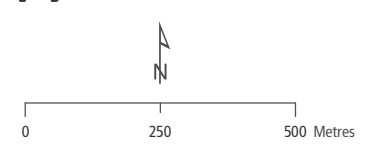
Hollow Mountain (Wudjub-Guyun) and Ngamadjidj Special Protection Areas



Coordinate System: GDA 1994 MGA Zone 54
 Projection: Transverse Mercator
 18/04/2019



Hollow Mountain (Wudjub-Guyun) and Mount Stapylton Rock Climbing Exclusion Zones



Coordinate System: GDA 1994 VICGRID94
 Projection: Lambert Conformal Conic

14/03/2019