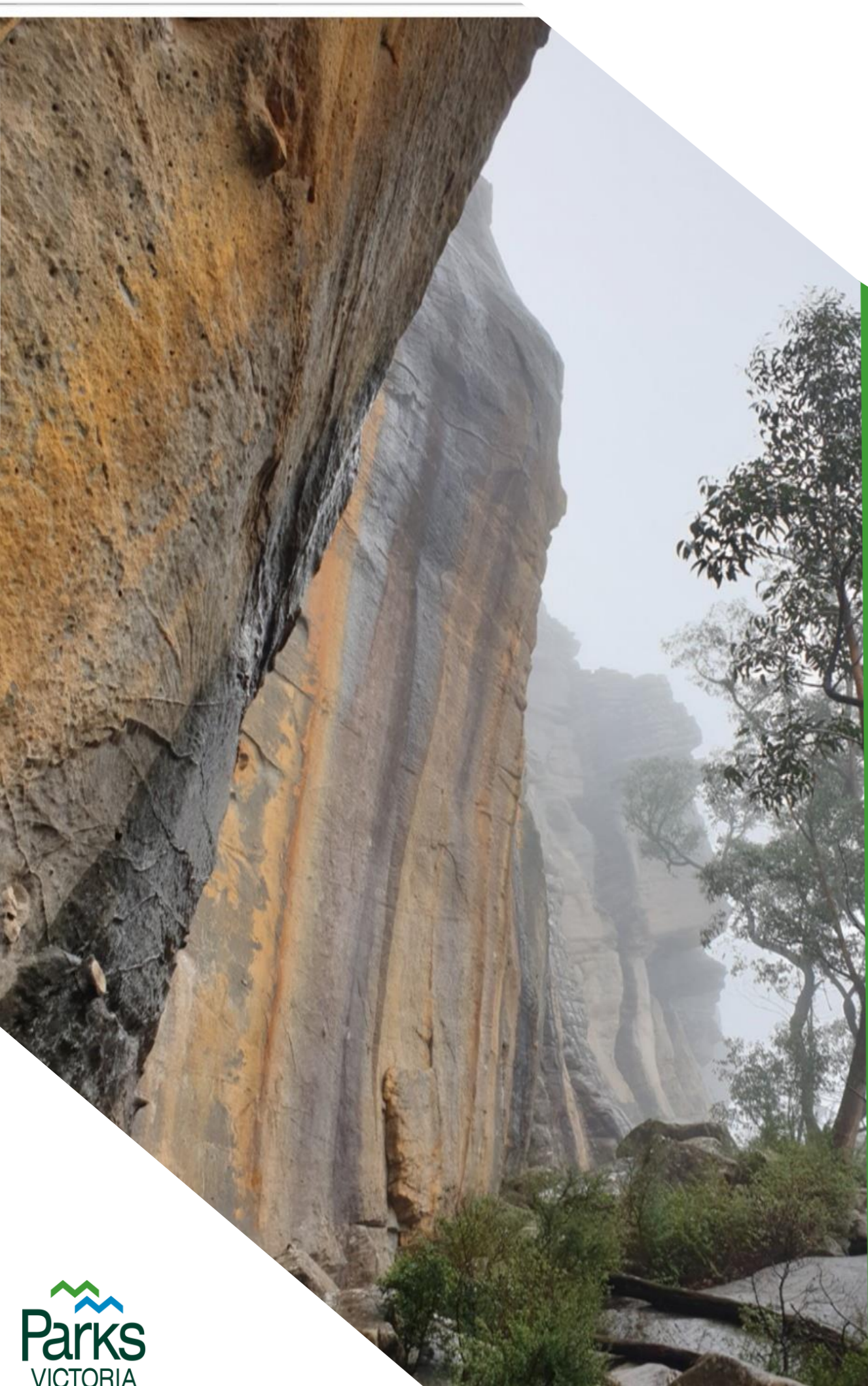


Protection of environmental and cultural values August 2020



Agenda

Welcome

Acknowledgement of Country

Introductions

Rediscovered cultural values

Protection of values

Future communications



Meeting purpose

- To provide information on the methodology being applied to the protection of values
- To celebrate and provide information on the recent rediscovery of cultural heritage values in Gariwerd (Grampians NP) and Dyurrite (Mount Arapiles-Tooan SP)
- To provide information on interim site protection measures and next steps
- To discuss future communications with the rock climbing community.



Protection of values

- The National Parks Act requires Parks Victoria to take action to protect cultural values and uphold compliance with the Aboriginal Heritage Act
- All cultural values are subject to the same level of protection – there is no hierarchy of importance
- Parks Victoria is working in partnership with Traditional Owners to ensure all values are protected from harm



Methodology

- 2019 cultural and environmental surveys have informed the draft GLMP
- Through these surveys our understanding and appreciation of the park's cultural significance continues to grow
- Environmental impacts are also evident, including soil compaction and erosion
- 11 climbing areas surveyed resulted in rediscoveries outside of Special Protection Areas
- Partnership approach with Traditional Owners to determine any temporary site protection measures and the long-term recommendations (GLMP)

Methodology

- A decision-making framework to guide decisions has been developed by Parks Victoria and Traditional Owners. It is informed by Parks Victoria's obligations under relevant legislation
- A cultural landscape approach is being applied – values assessments are not limited to presence/absence of tangible values
- Both cultural and natural values must be considered
- When values are rediscovered, we will act as quickly as possible to ensure they are protected from harm
- Immediate temporary protection measures may be required while a long-term protection and management approach is agreed
- This briefing provides details about three sites that Parks Victoria has confirmed require temporary protection measures



Bundaleer

- Parks Victoria has previously advised the rock climbing roundtable of the presence of cultural values at Bundaleer and that additional site protection may be required in the future
- It has been recognised for some time that Bundaleer included tangible Aboriginal cultural heritage and is an important Aboriginal place
- Through further assessments, archaeological deposits within rock shelters, quarry sites, concentrations of stone tools and, unusually an ochre deposit have been rediscovered
- The registration of these cultural places on the Victorian Aboriginal Heritage Register is being updated to include these rediscoveries
- Environmental impacts are also evident, including soil compaction and erosion

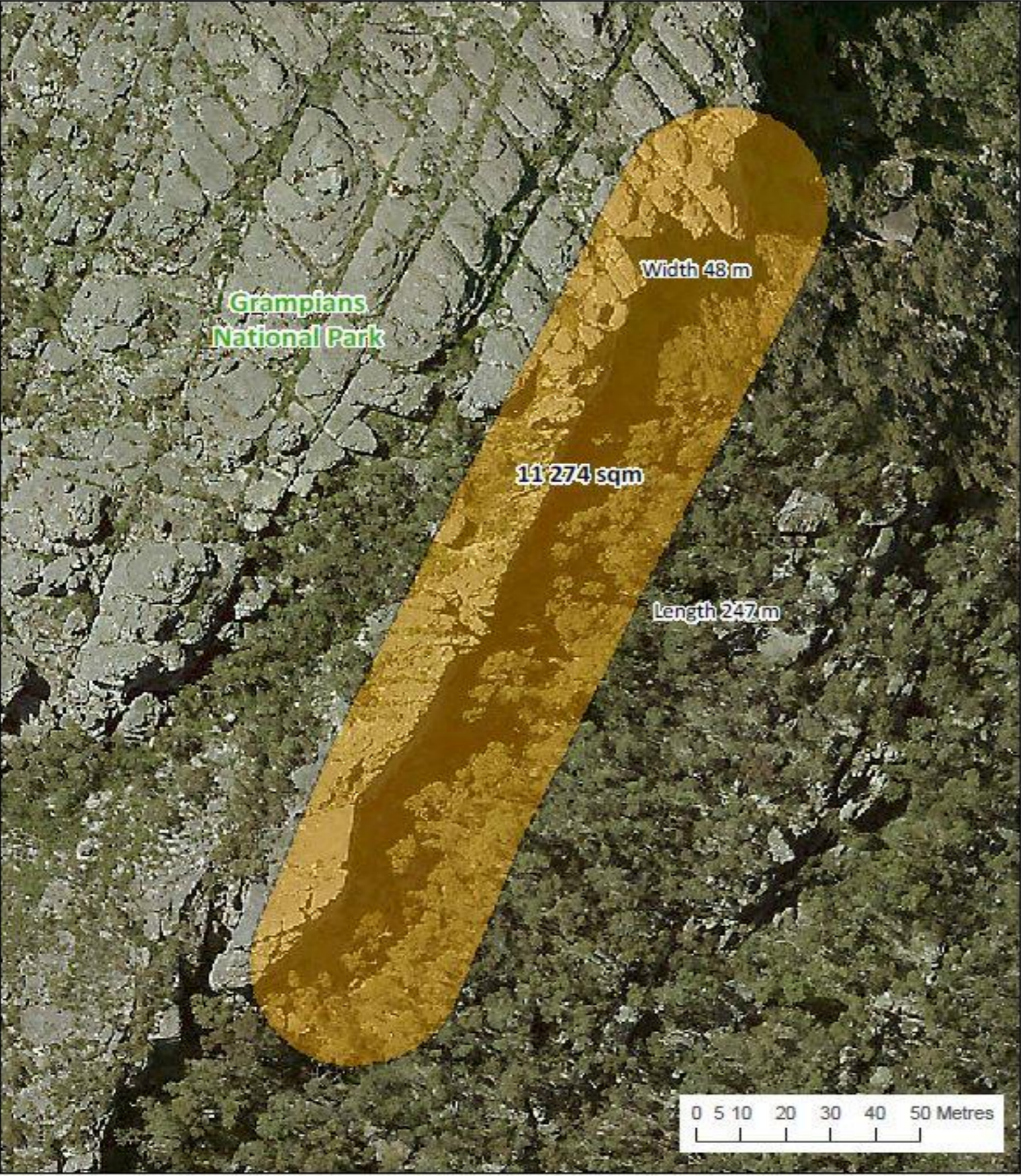




Bundaleer

- Recent site visit (June 2020) with Traditional Owners and Gariwerd Wimmera Reconciliation Network
- A temporary protection zone has been established and signage will be installed to ensure people don't enter the area and inadvertently cause harm
- All park visitors are advised not to enter this area
- The temporary protection zone will be clearly marked with signage and barrier fencing
- The zone will be consistent with previous advice and commence from 30m north of the climb known as Manic Depressive and extend in a southerly direction for approximately 250m


Bundaleer temporary protection zone



Aboriginal Cultural Heritage Temporary Protection Zone - Bundaleer, Grampians National Park

13/07/2020
Coordinate System: GDA 1994 MGA Zone 54
Projection: Transverse Mercator



 Temporary Protection Zone - No public access



Access to the southern extent of Bundaleer is not permitted through the Temporary Protection Zone.

Maps produced in consultation with Traditional Owners

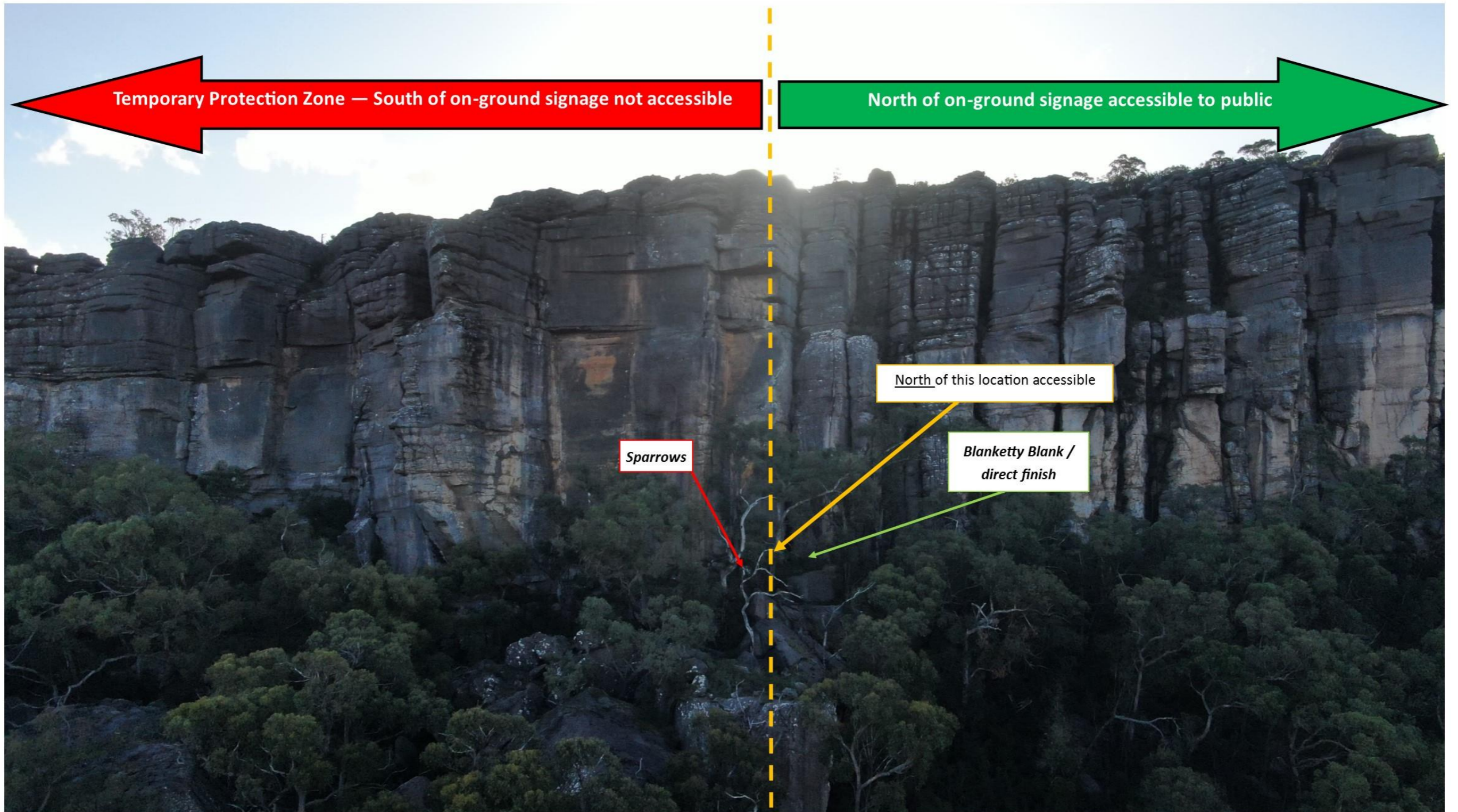


Disclaimer: Parks Victoria does not guarantee that this data is without flaw of any kind and therefore disclaims all liability which may arise from you relying on this information.
Data source acknowledgements: State Digital Mapbase, The State of Victoria and the Department of Environment, Land, Water and Planning.



Access

- The temporary protection zone applies to all users, walkers, rock climbers and other visitors
- Climbing and other recreational activities is available outside the temporary protection zone
- The area from 30 metres to the north of the route called *Manic Depressive* (and northwards of this point) is unaffected
- The area approximately 250m south of this point is covered by the temporary protection zone and unavailable for climbing, abseiling or any other recreational activity



All climbs within the Temporary Protection Zone are not accessible

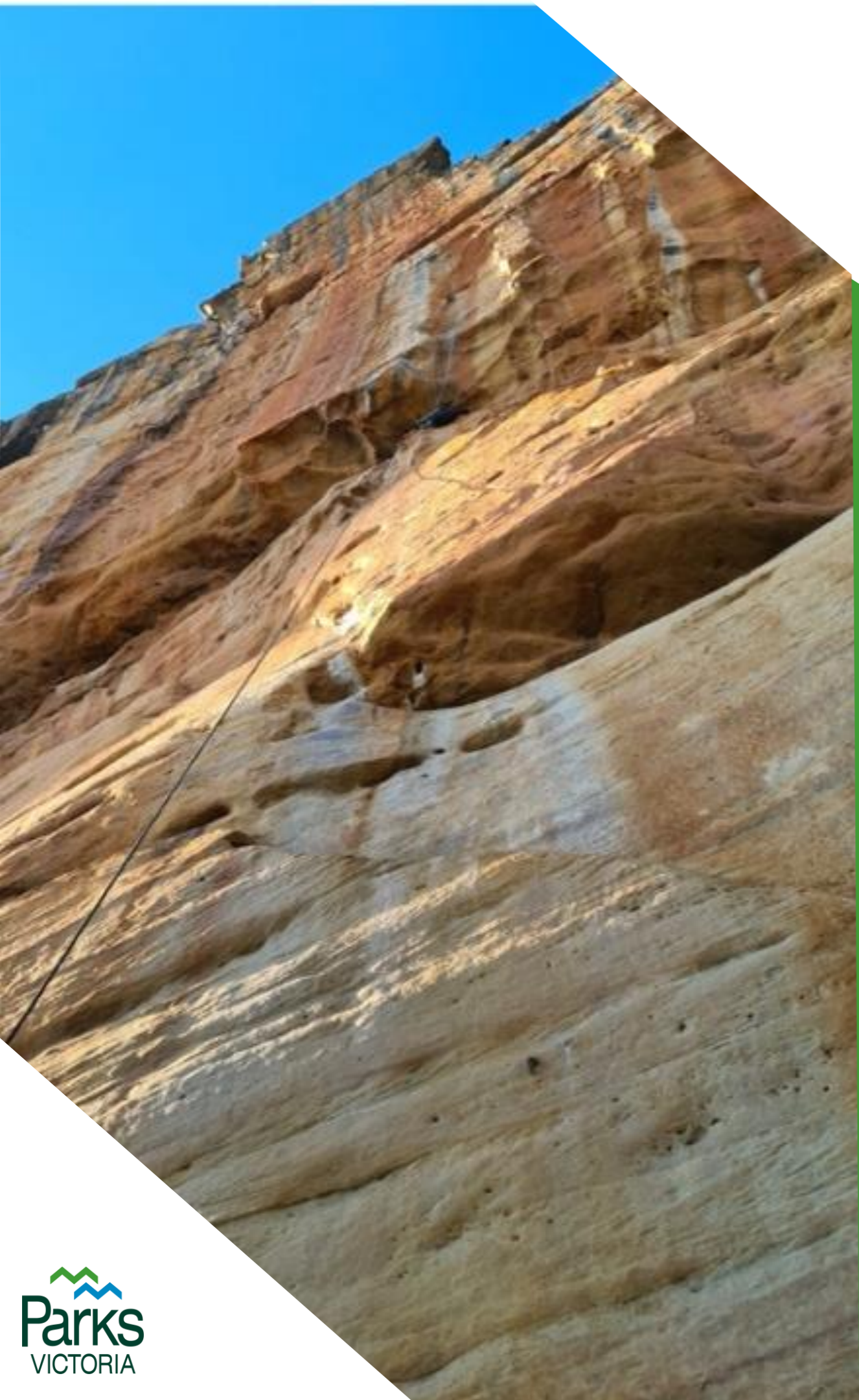
This includes the following sectors:

- Touchstone sector
- Dragons Alcove
- Camping cave

Accessible Sectors

- Pathos sector
- The Minch sector
- Gerontonian sector
- Genesis Wall
- Basilisk sector
- Scarab sector
- Live Action Wall

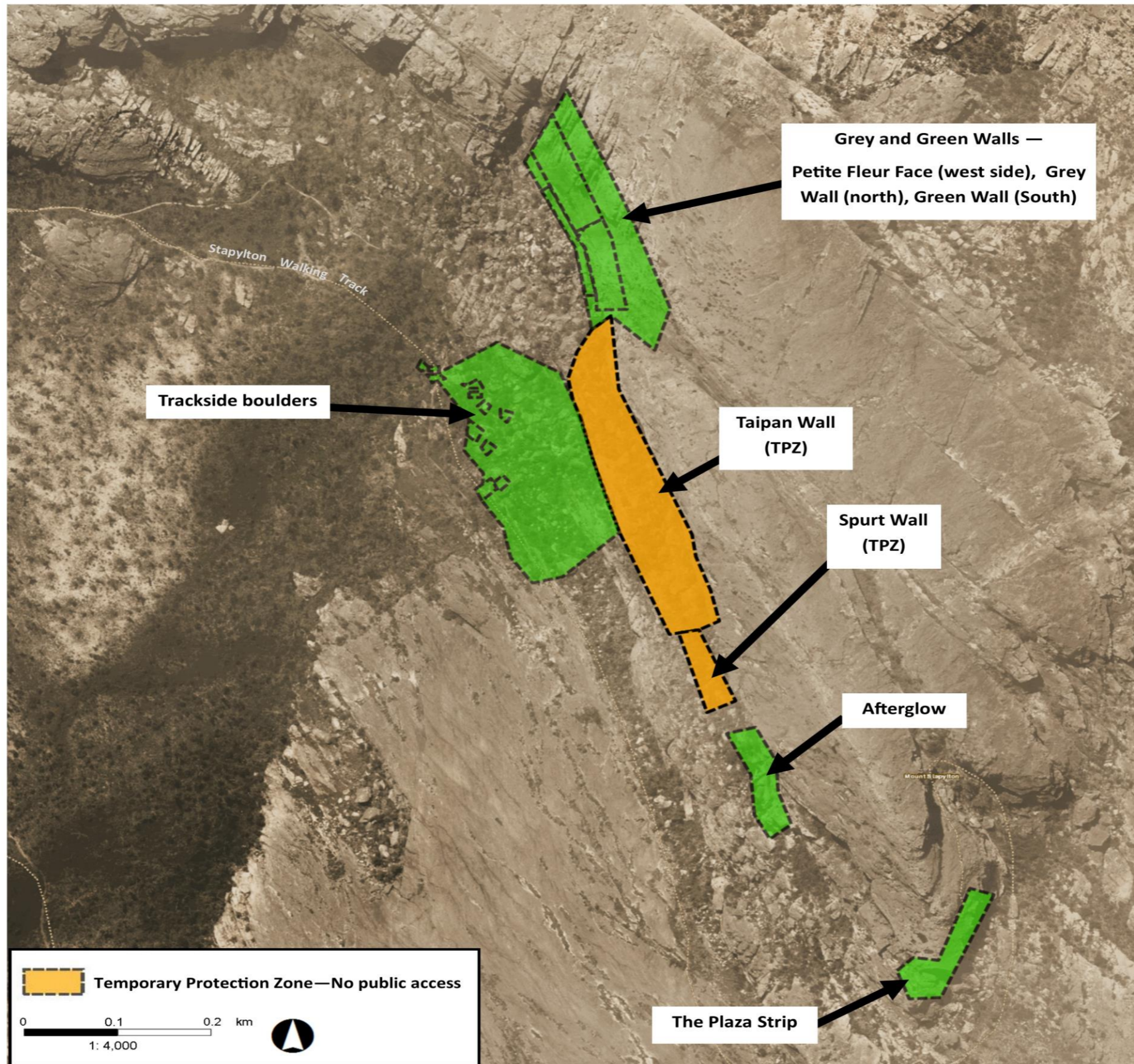
*Disclaimer: Not to scale. For general illustrative purposes only. Information including names of climbs and sectors obtained from *The Crag*.



Taipan Wall/Spurt Wall

- Quarries and archaeological deposits have been rediscovered and recently registered on the Victorian Aboriginal Heritage Register
- Environmental impacts are also evident, including soil compaction and erosion
- Recent site visit (June 2020) with Traditional Owners and Gariwerd Wimmera Reconciliation Network
- A temporary protection zone has been established
- All park visitors are advised not to enter this area. Climbing, abseiling or any other recreational activity is not advised
- Access remains to climbing areas including Lower Taipan, Trackside Boulders, Grey and Green Walls, Afterglow, Plaza Strip

Taipan Wall/Spurt Wall temporary protection zone



* Green denotes accessible climbing areas



What happens next at these sites in the Grampians National Park?


- Stakeholder update later today with supporting information including maps shown here
- Long term site protection approach (which could include access where appropriate) is being discussed with Traditional Owners
- Discussions on managed access (if appropriate) will also form part of this process
- Priority is to prevent any future harm to the cultural and environmental values
- Temporary protection zones will remain in place until finalisation of the Greater Grampians (Gariwerd) Landscape Management Plan or until otherwise advised by Parks Victoria

Rediscoveries at Mount Arapiles-Tooan State Park

- Aboriginal rock art has been rediscovered at a location known as Dyurrite 3 (*Around the World Boulder*) in the Mount Arapiles-Tooan State Park.
- A temporary protection zone has been established
- Further values have been rediscovered in the surrounding area and the temporary protection zone will be expanded to include these areas
- All park visitors are advised not to enter this area. Climbing, bouldering, abseiling or any other recreational activity is not advised

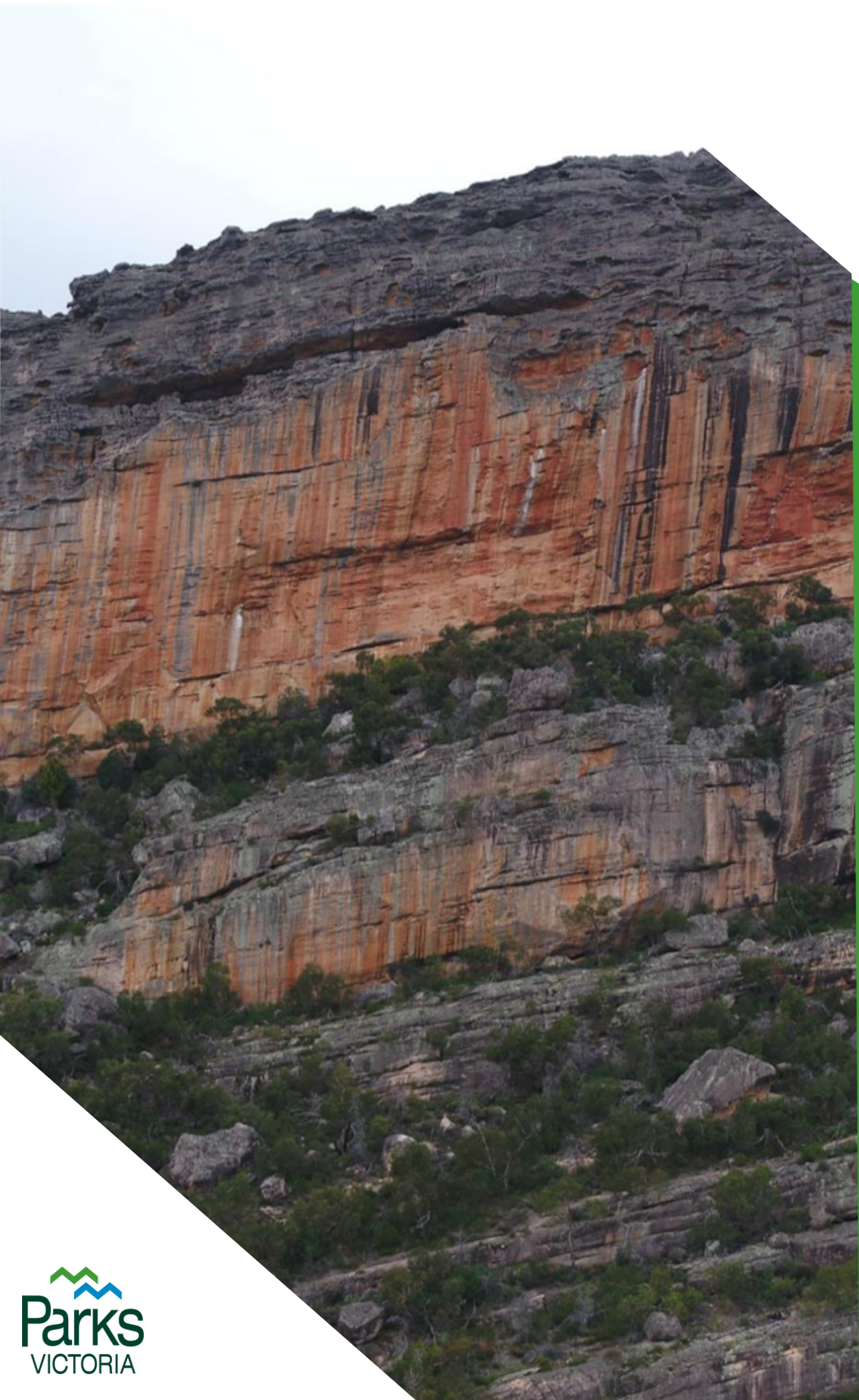
Dyurrite 3 temporary protection zone





What's next at Mount Arapiles-Tooan State Park?

- Stakeholder update later today with supporting information
- Parks Victoria and Barengi Gadjin Land Council are working through the ongoing protection measures required at six known rock art sites
- This includes Dyurrite 2 (Taylor's Rock), Dyurrite 3 and the *Plaque Rock* site
- Further protections may be required



Rediscoveries in parks and reserves across Victoria

- Cultural heritage rediscoveries are a normal part of park management and will continue to take place after the management planning process
- Cultural heritage values can be rediscovered by Parks Victoria staff, Traditional Owners and the general public
- As soon as Parks Victoria becomes aware of and confirms a rediscovery of Aboriginal heritage we are obliged to protect it regardless of whether or not it has been registered on the Victorian Aboriginal Heritage Register
- Traditional Owners are involved in decisions about how cultural heritage values are protected



Communicating rediscoveries

- The roundtable is due to finish up following the release of the draft Greater Gariwerd Landscape Management Plan
- Our standard approach to communicating rediscoveries and potential changes in access is:
 - Set up signage around the area
 - Notify the peak representative body for any users affected by this change (typically by phone call)
 - Send out emails to any known interested clubs/groups and subscribed individuals (there isn't always a list in all instances)
 - Distribute a media release and update our website to notify the general public
- How can we enable this standard approach for future communications?



Questions